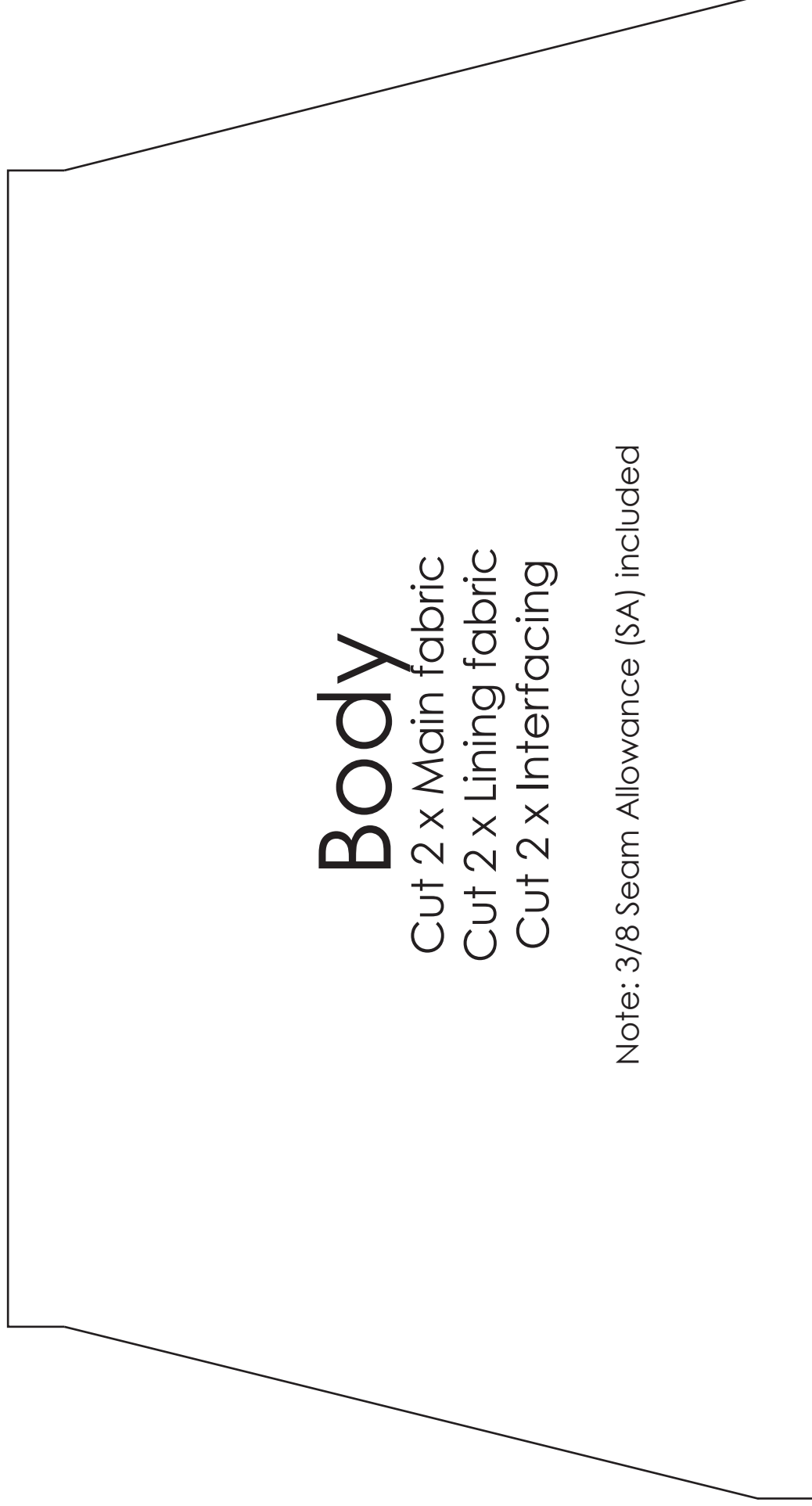


# Clutch Purse Pattern



## Body

Cut 2 x Main fabric

Cut 2 x Lining fabric

Cut 2 x Interfacing

Note: 3/8 Seam Allowance (SA) included

Clutch Purse Pattern

**FOLD**

**Strap**

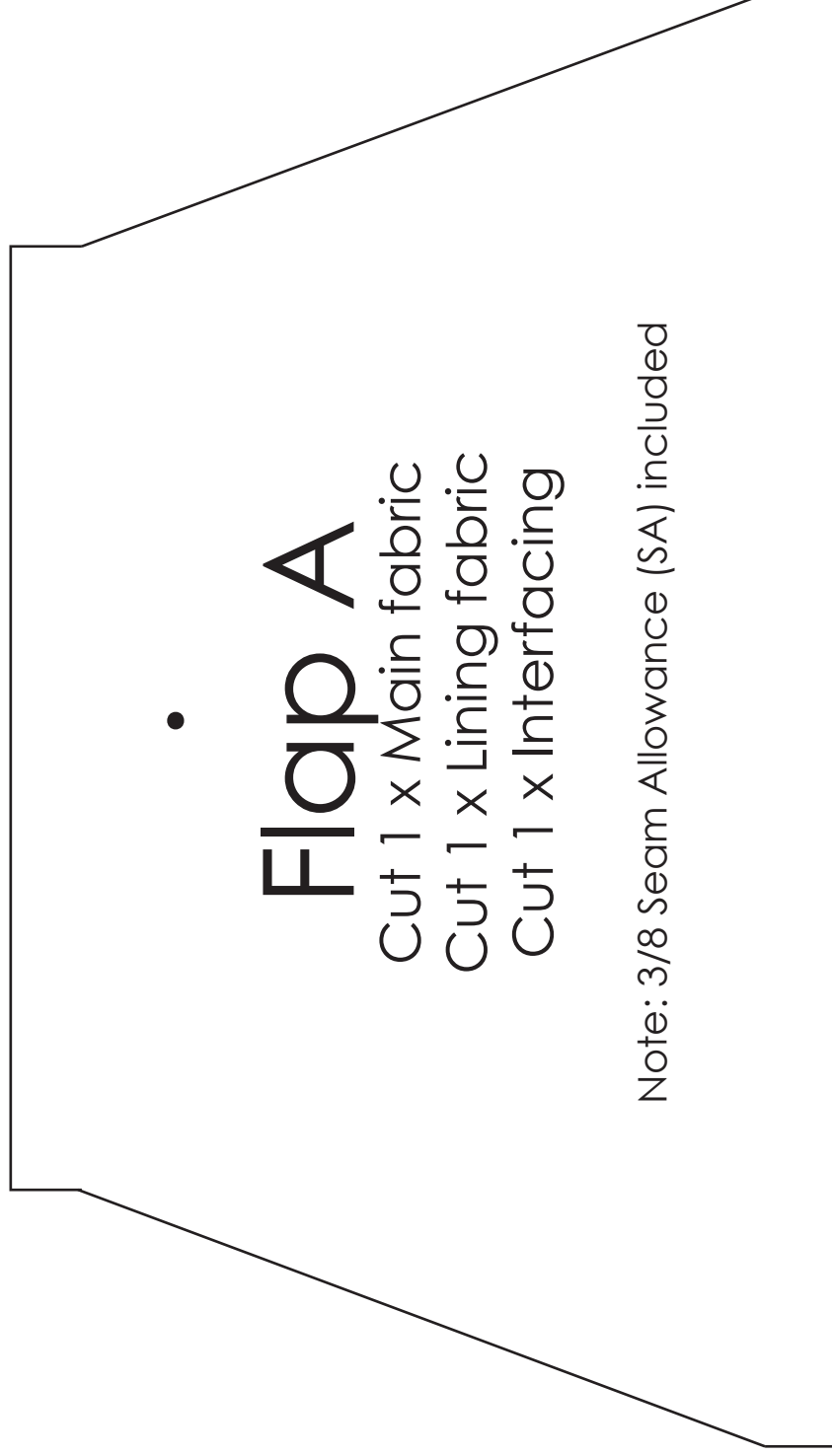
Cut 1 x Main/Lining fabric  
(cut on fold)

**Pocket**

Cut 1 x Main fabric  
Cut 1 x Lining fabric

Note: 3/8 Seam Allowance (\$A) included

## Clutch Purse Pattern



## Clutch Purse Pattern

# Flap B

Cut 1 x Main fabric

Cut 1 x Lining fabric

Cut 1 x Interfacing

Note: 3/8 Seam Allowance (SA) included

